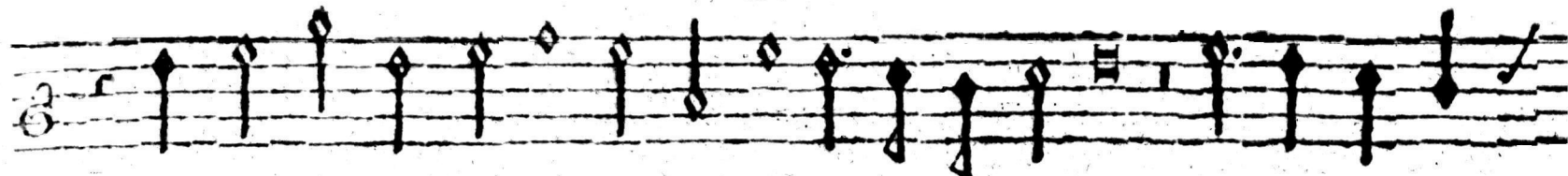
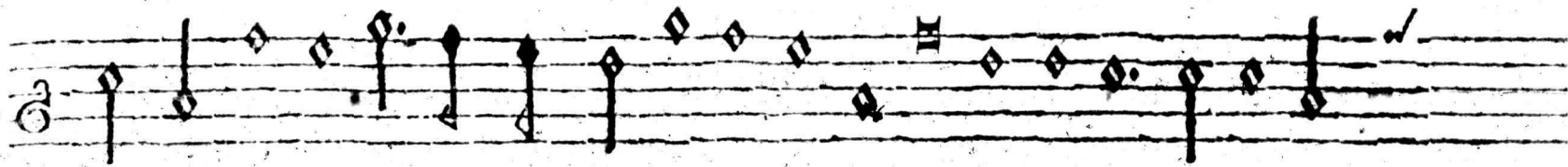


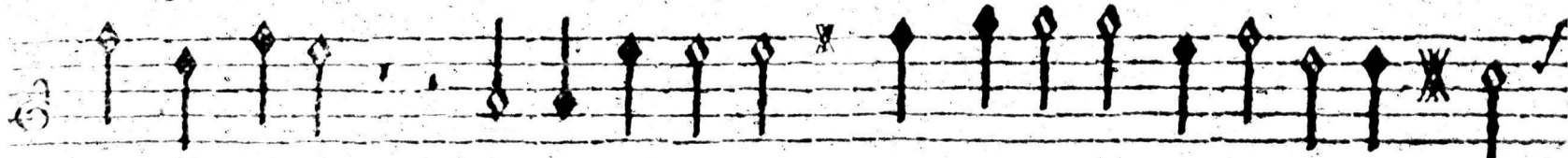
Superius.



*ff:* re com pense plus di gne O



coupl' heurus' O couple heureuse O nuit bien fortuné e



Chantons io *ff:* Chan tons io Hy men o Hyme né



e O Hy me née Hy men o, Hymené e Chan tons io

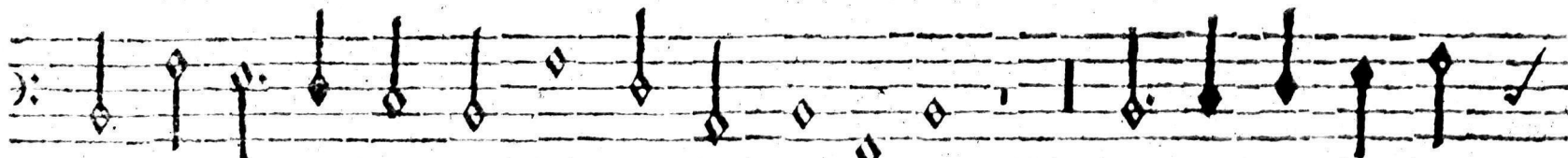


*ff:* Chantons io, Hy men o Hyme nec. o



Hyme né e Hy men o Hyme né e Hy me né e.

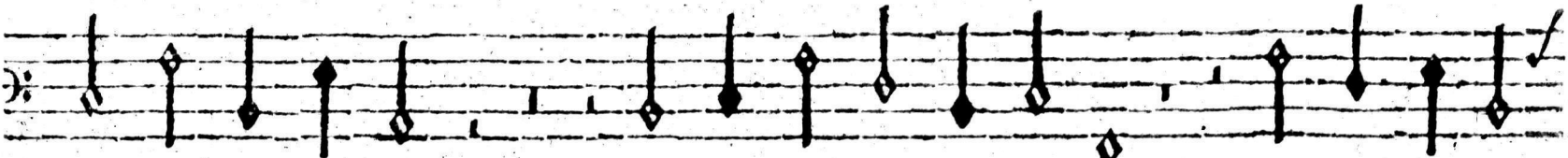
Bassus.



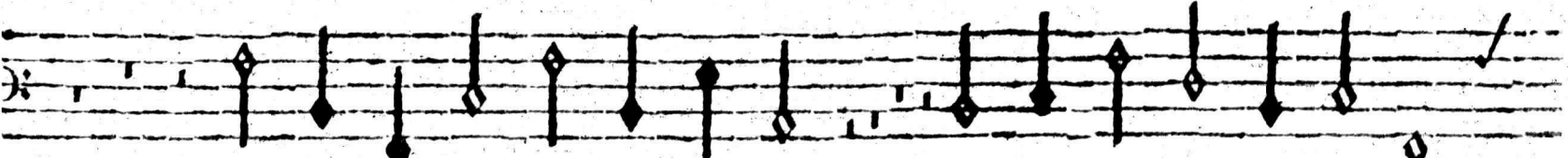
*ff:* re com pen se plus dig ne O



coupl' heurus' O nuit O nuit bien for tu né e Chan tons i



o *ff:* Hymen o Hy mené e: Chan tons io



*ff:* Chantons io Hy men o Hy me né e



O Hy o Hyme né e.