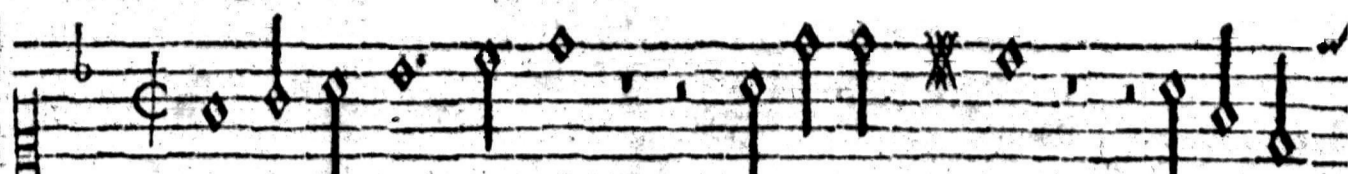


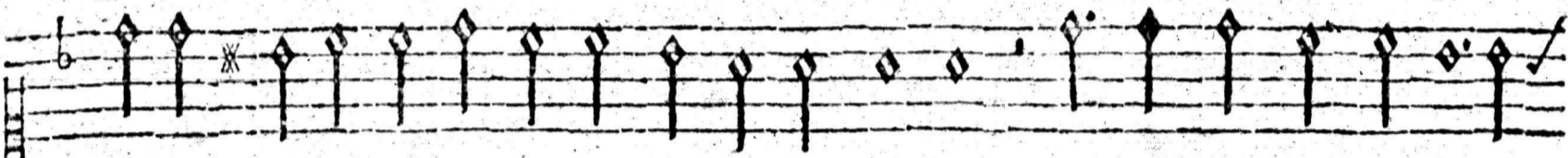
Seconda parte. Canto.



T sec ca o gran pieta o gran pieta quasi ogni



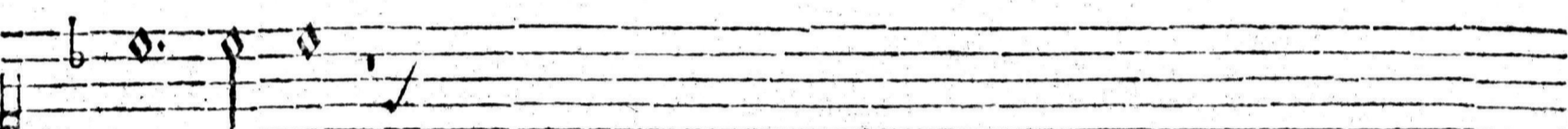
ve na La Ninfa giunse all'hor ne l'ultim' hora ne l'ultim'



hora che per dut'ha la voce & polso & lena Da pieta punt' il piang'e

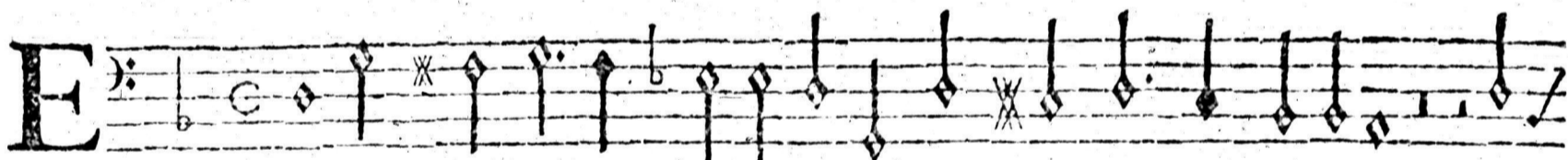


abbrac- ci all' hora e abbrac ci all' ho ra Ei disse sol :ff:

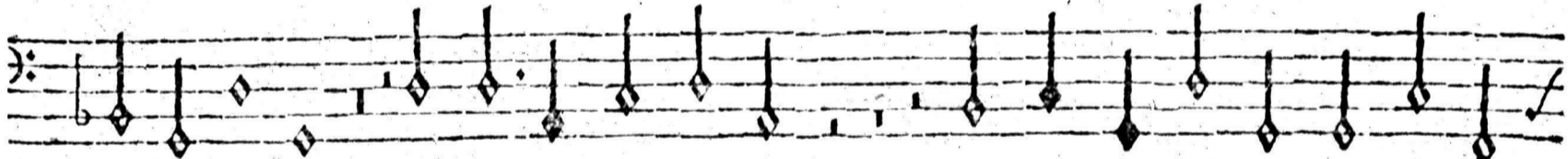


fi che,

Basso.



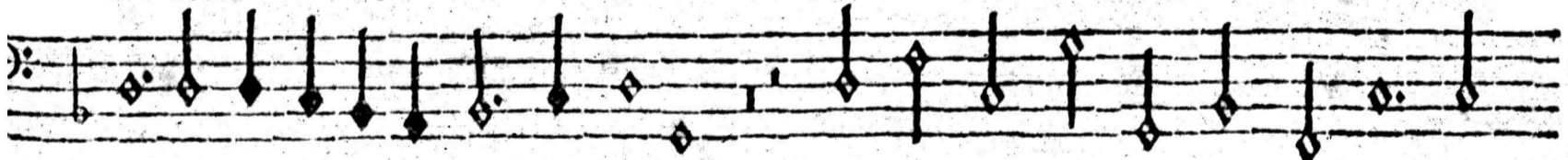
T sec ca o gran pieta Et secca o gran pieta qua



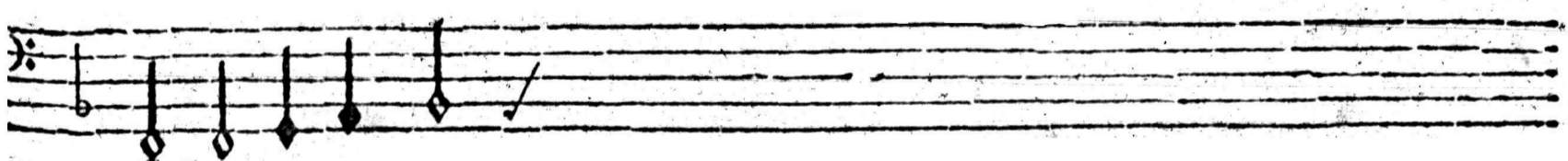
siognivena La Ninfa giunse all'hor ne l'ul tim' hora che per dut'



ha la voce & pol so & le na Da pie ta punt' il piang'e abbraccia all'ho-



ra e abbrac cia all' hora Ei disse sol :ff: fi



che s'inte pe-